



# Transformation Projects and Regeneration

Helensburgh and Lomond Area Committee  
Hermitage Park Update  
*19th December 2019*



# 1. Lot 1 The Pavilion



## 2. Lot 2 Landscape and Conservation





**Main Gate and entrance to the park**



Former tennis courts now multi-use space



## Bowling Green with views to the Victoria Halls



## New playground



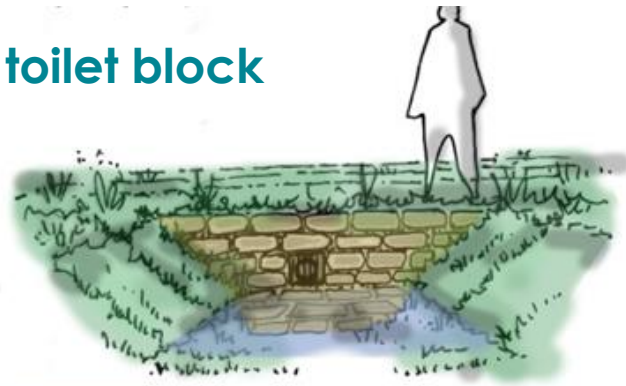
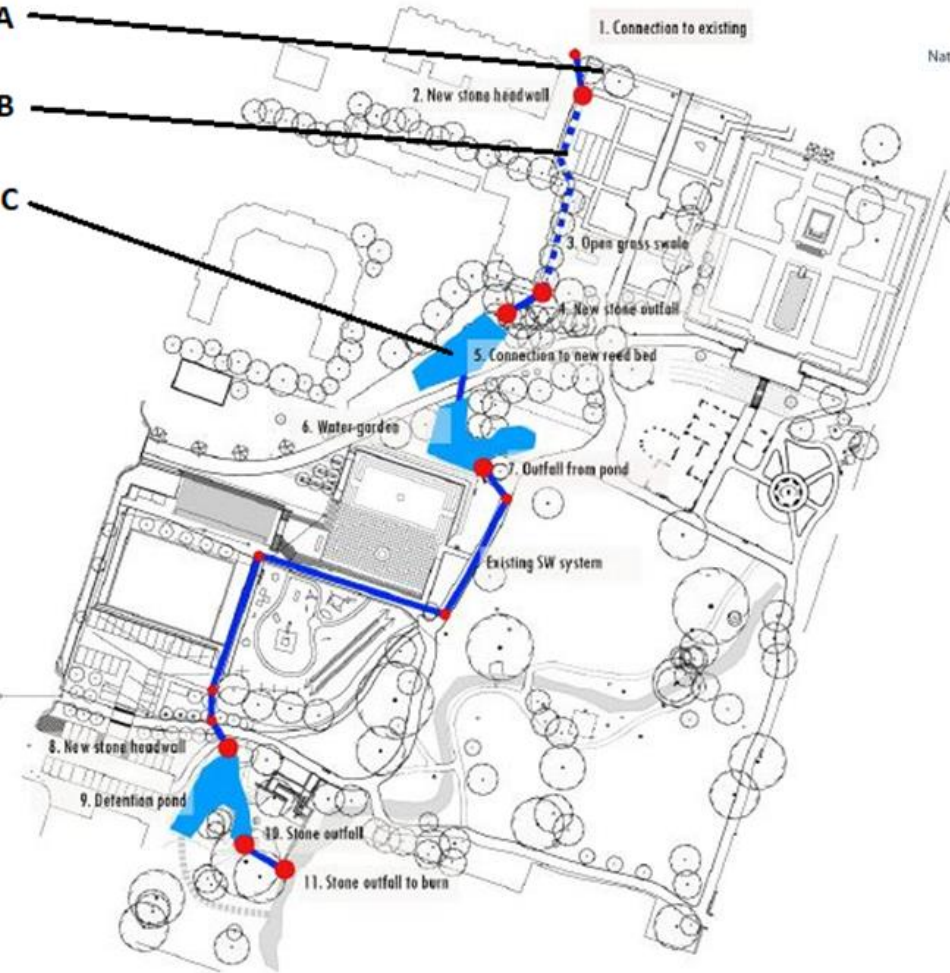


**New development garden with glasshouse**



# Swale and dipping pool, former disused toilet block

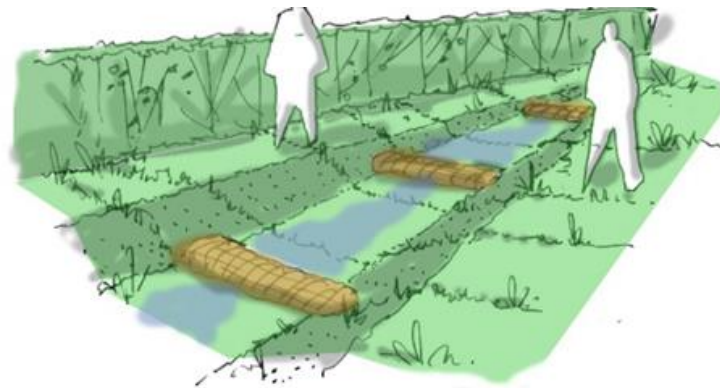
## ROUTE PLAN



Natural stone headwall.



Sketch of reed bed



Vegetated swale at demonstration garden



## A 'Listed War Memorial





## New flower garden and sundial

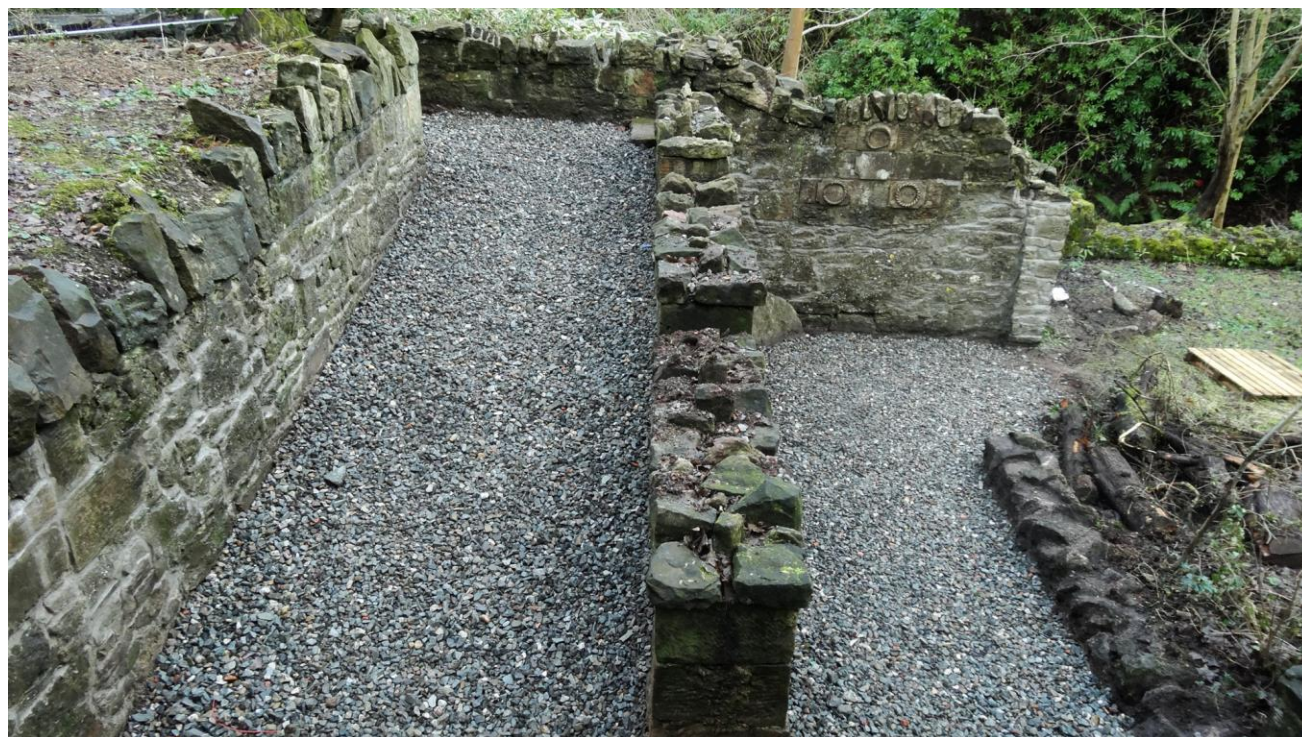


## Hermits Well





Mill remains with interpretation



# New path and drainage network





## Path edges





# New park furniture



# Interpretation of the park

